

VK tekeningenlijst - bwnr.103

| Tekeningnummer | Omschrijving | Datum |
|----------------|-----------------|------------|
| 103.01.M6k | Renvooi | 27-10-2020 |
| 103.02.M6k | Begane grond | 27-10-2020 |
| 103.03.M6k | Verdieping 1 | 27-10-2020 |
| 103.04.M6k | Verdieping 2 | 27-10-2020 |
| 103.05.M6k | Vliering | 27-10-2020 |
| 103.06.M6k | Voorgevel | 27-10-2020 |
| 103.07.M6k | Linkerzijgevel | 27-10-2020 |
| 103.08.M6k | Achtergevel | 27-10-2020 |
| 103.09.M6k | Rechterzijgevel | 27-10-2020 |
| 103.10.M6k | Doorsnede A | 27-10-2020 |
| 103.11.M6k | Doorsnede B | 27-10-2020 |



| | | | | | |
|-----------|--------|----------------------|--------------------------------------|----------------|------------|
| project | | | Quatrebras Park, Quartier II, Fase 2 | | |
| onderwerp | | Voorblad Bwnr.103 | | werknummer | 1741 |
| | | | | tekeningnummer | 103.00.M6k |
| schaal | n.v.t. | status | Definitief | (wijz)/datum | 27-10-2020 |

RENVOOI MATERIALEN EN SYMBOLEN

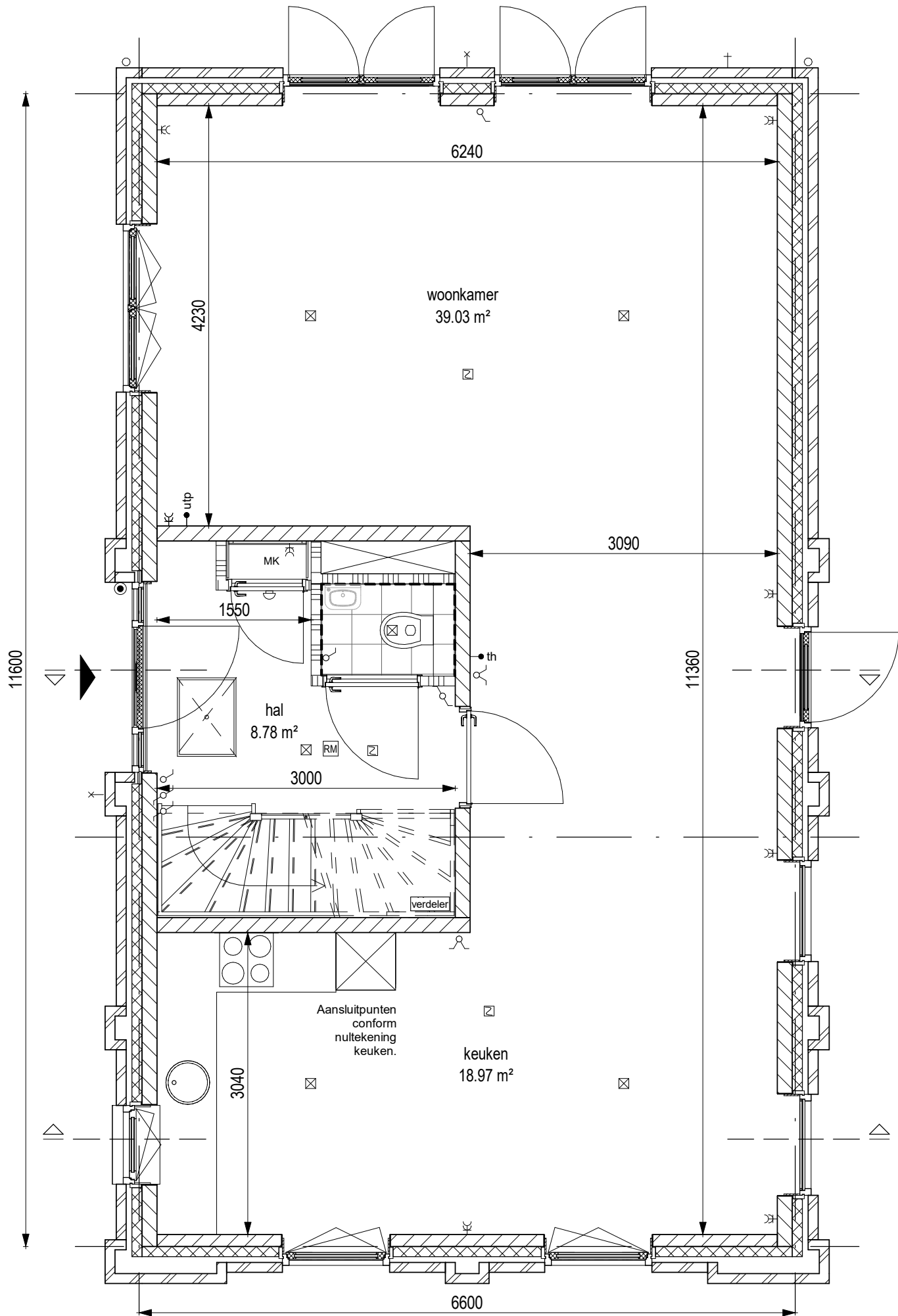
| | |
|---|--|
|  | metselwerk d=100mm |
|  | isolatie d=102mm |
|  | kalkzandsteen d=120mm / 150mm |
|  | lichte binnenwand d=100mm |
|  | binnenwand, metalstud d=100mm |
|  | binnenwand, metalstud voorzetwand d=75mm |
|  | wandtegelwerk |
|  | sectionaal deur |

| | |
|---|-------------------------|
|  | kruipluik |
|  | hemelwaterafvoer |
|  | buitenkraan |
| wm | opstelplaats wasmachine |
| wd | opstelplaats wasdroger |

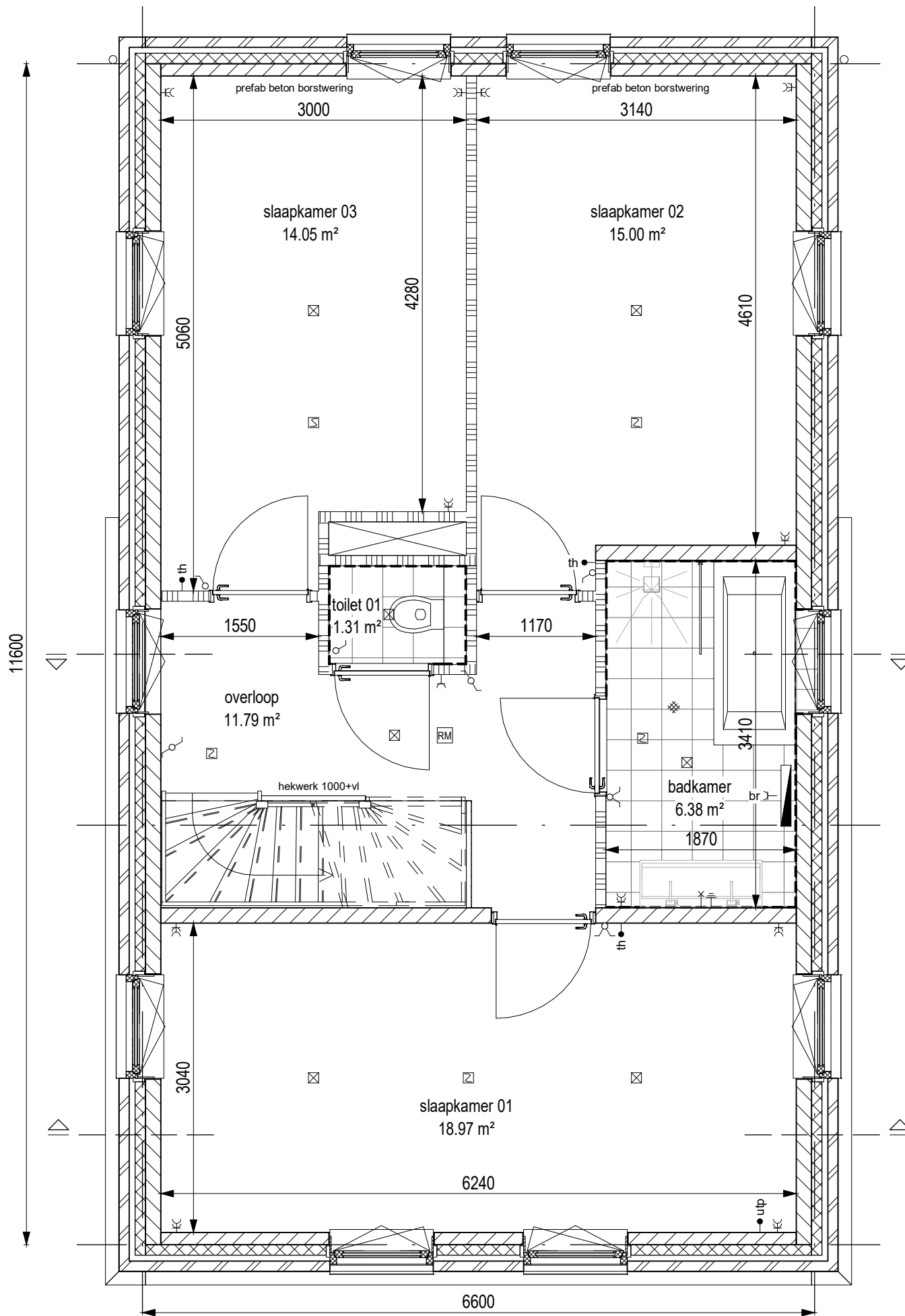
RENVOOI INSTALLATIES

| | |
|---|--|
|  | enkele wandcontactdoos met randaarde |
|  | enkele wandcontactdoos met randaarde, cv-ketel |
|  | enkele wandcontactdoos met randaarde, mechanische ventilatie |
|  | enkele wandcontactdoos met randaarde, badkamer radiator |
|  | enkele wandcontactdoos met randaarde, wasdroger |
|  | enkele wandcontactdoos met randaarde, wasmachine |
|  | dubbele wandcontactdoos met randaarde, verticaal |
|  | onbedraad aansluitpunt |
|  | bedraad aansluitpunt, UTP |
|  | bedraad aansluitpunt, ruimteregeling/naregeling |
|  | aansluitpunt pv panelen |
|  | rookmelder |
|  | boilervat warmtepomp |
|  | warmtepomp |

| | |
|---|---|
|  | aardingspunt |
|  | aardmat |
|  | enkelpolige schakelaar |
|  | serie schakelaar |
|  | wisselchakelaar |
|  | aansluitpunt plafondlichtpunt, inbouwspot |
|  | aansluitpunt spotjes |
|  | aansluitpunt wandlichtpunt |
|  | beldrukker |
|  | bel |
|  | vloerverwarming |
|  | radiator |
|  | verdeler |
|  | WTW - unit |

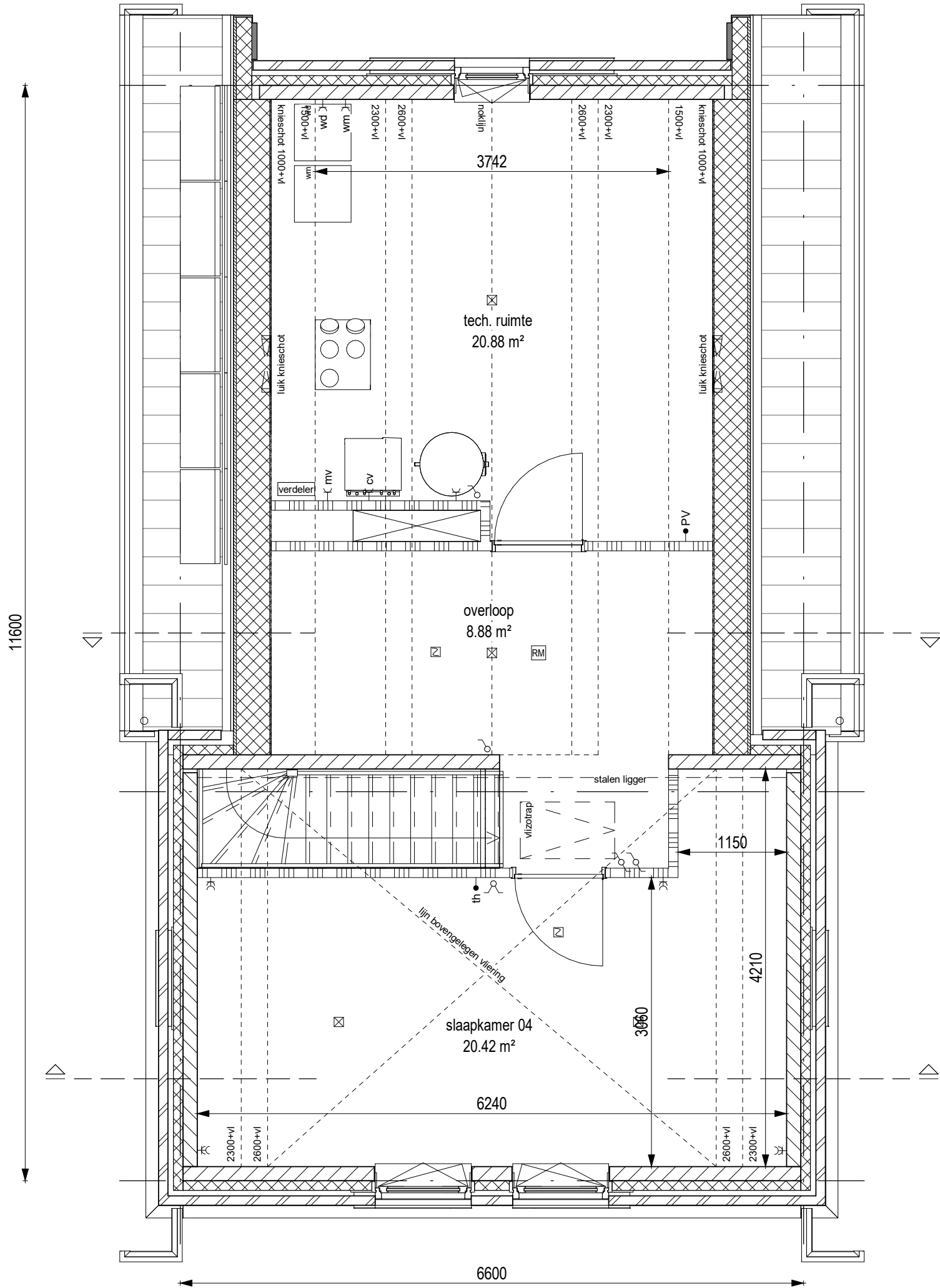


| | | |
|--------------------------------------|----------------|--------------|
| project | | |
| Quatrebras Park, Quartier II, Fase 2 | | |
| onderwerp | werknummer | |
| Begane grond | 1741 | |
| Bwnr.103 | tekeningnummer | |
| | 103.02.M6k | |
| schaal | status | (wijz)/datum |
| 1:50 | Definitief | 27-10-2020 |

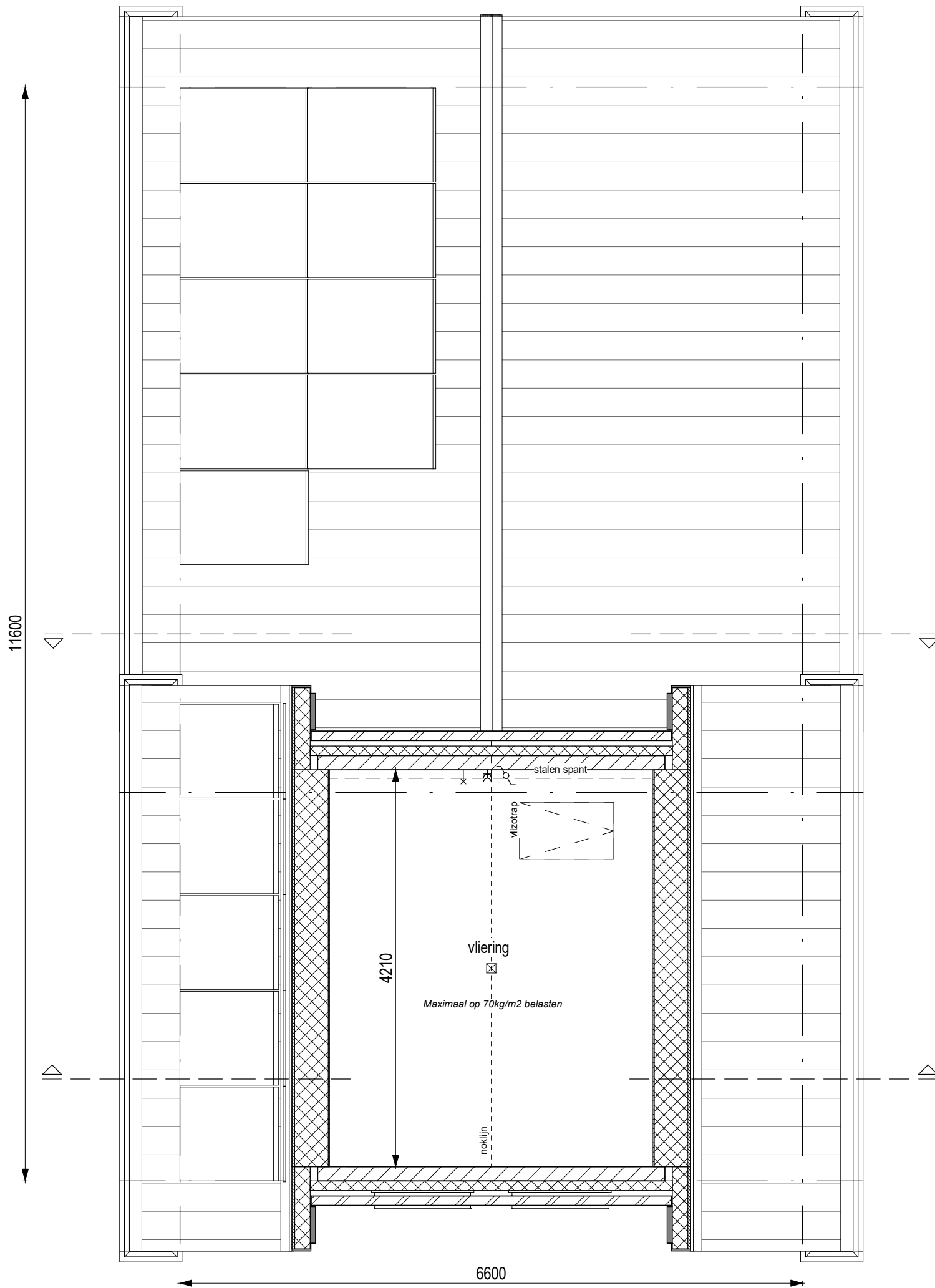


AM

| | | |
|--|----------------------------|-------------------------------------|
| project Quatrebras Park, Quartier II, Fase 2 | | |
| onderwerp Verdieping 1 Bwnr.103 | werksnummer 1741 | tekeningnummer 103.03.M6k |
| schaal 1:50 | status Definitief | (wijz)/datum 27-10-2020 |

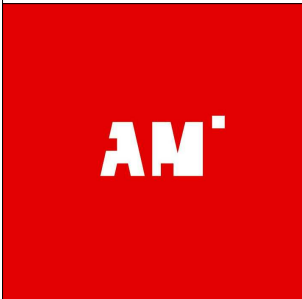
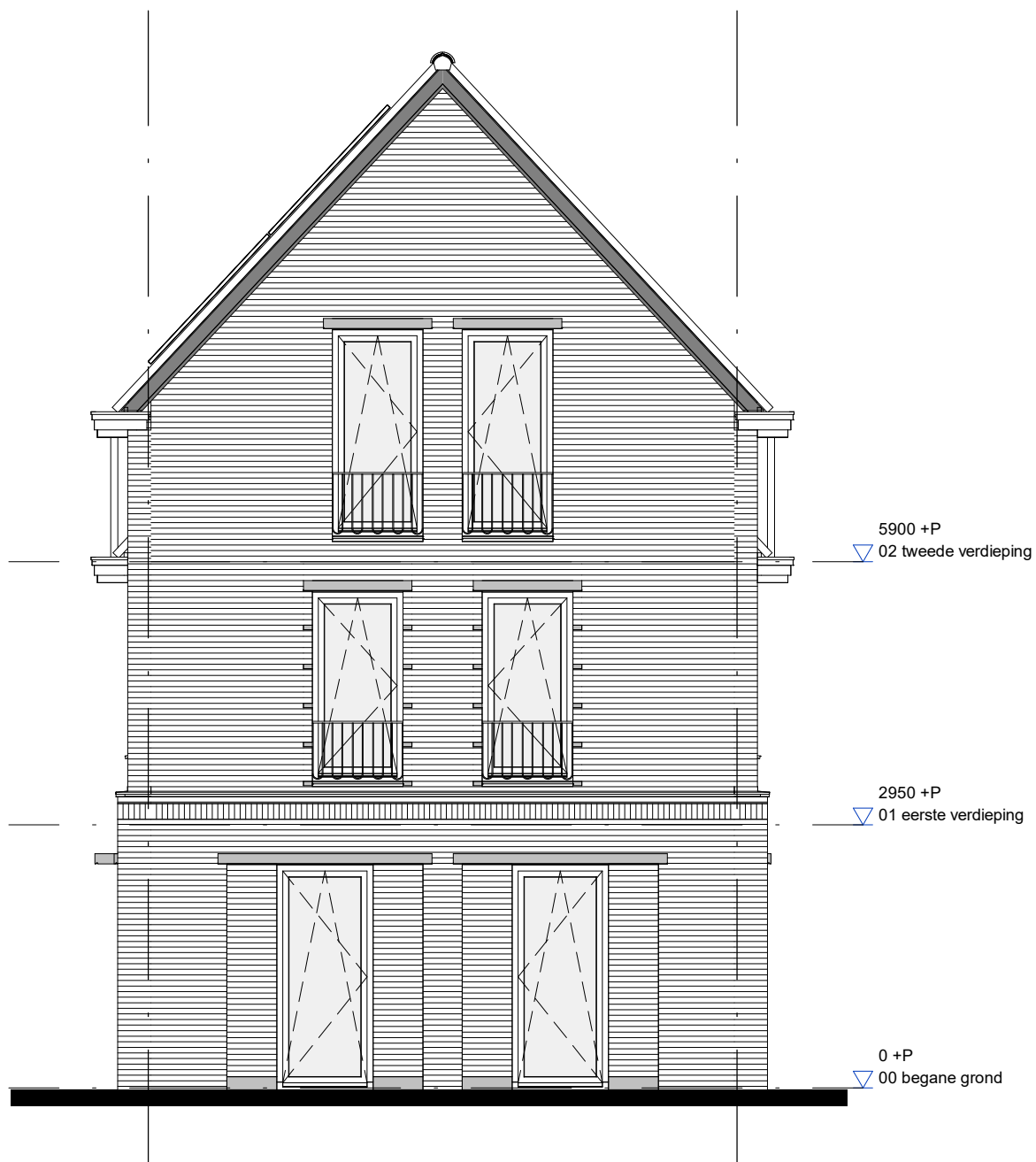


| | | |
|--|----------------------|-------------------------------------|
| project Quatrebras Park, Quartier II, Fase 2 | | |
| onderwerp Verdieping 2 Bwnr.103 | werksnummer 1741 | tekeningnummer 103.04.M6k |
| schaal 1:50 | status Definitief | (wijz)/datum 27-10-2020 |

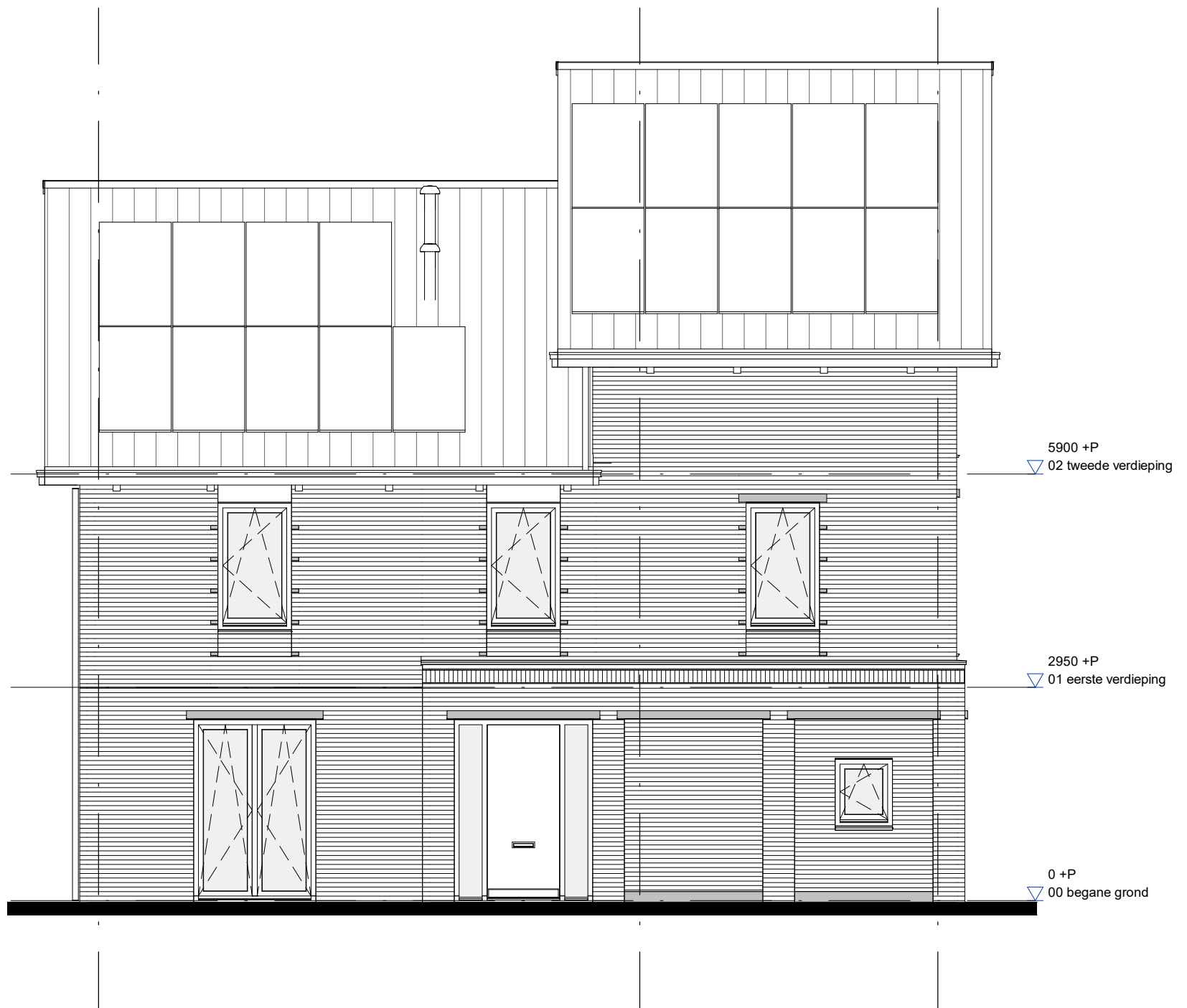


AM

| | | | |
|-----------|------------|--------------------------------------|--|
| project | | Quatrebras Park, Quartier II, Fase 2 | |
| onderwerp | | werknummer | |
| Vloering | | 1741 | |
| Bwnr.103 | | tekeningnummer | |
| | | 103.05.M6k | |
| schaal | status | (wijz)/datum | |
| 1:50 | Definitief | 27-10-2020 | |

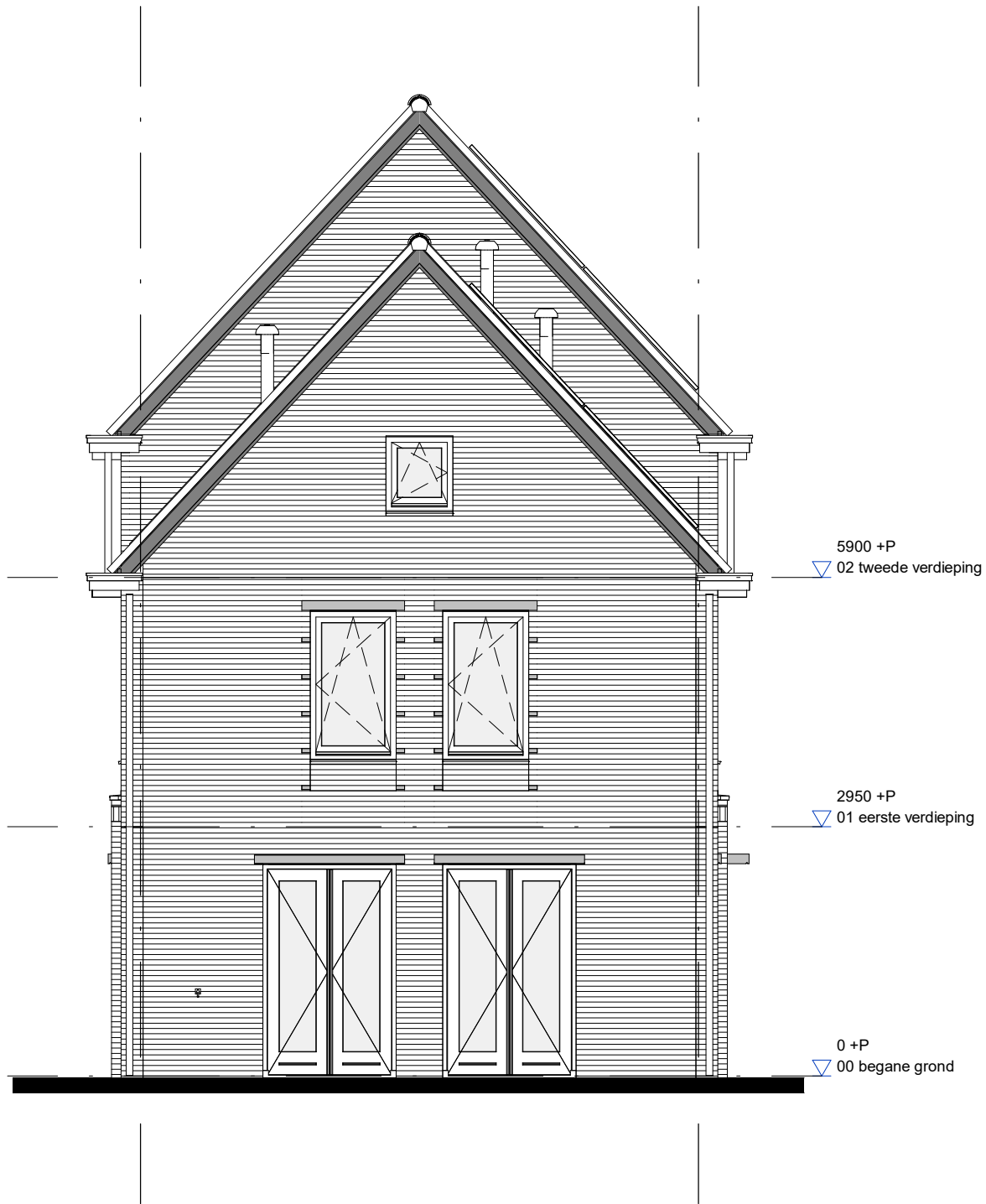


| | | | |
|-----------|------------|--------------------------------------|--|
| project | | Quatrebras Park, Quartier II, Fase 2 | |
| onderwerp | | werknummer | |
| Voorgevel | | 1741 | |
| Bwnr.103 | | tekeningnummer | |
| | | 103.06.M6k | |
| schaal | status | (wijz)/datum | |
| 1:75 | Definitief | 27-10-2020 | |



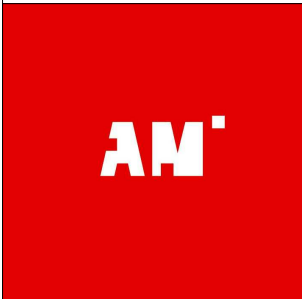
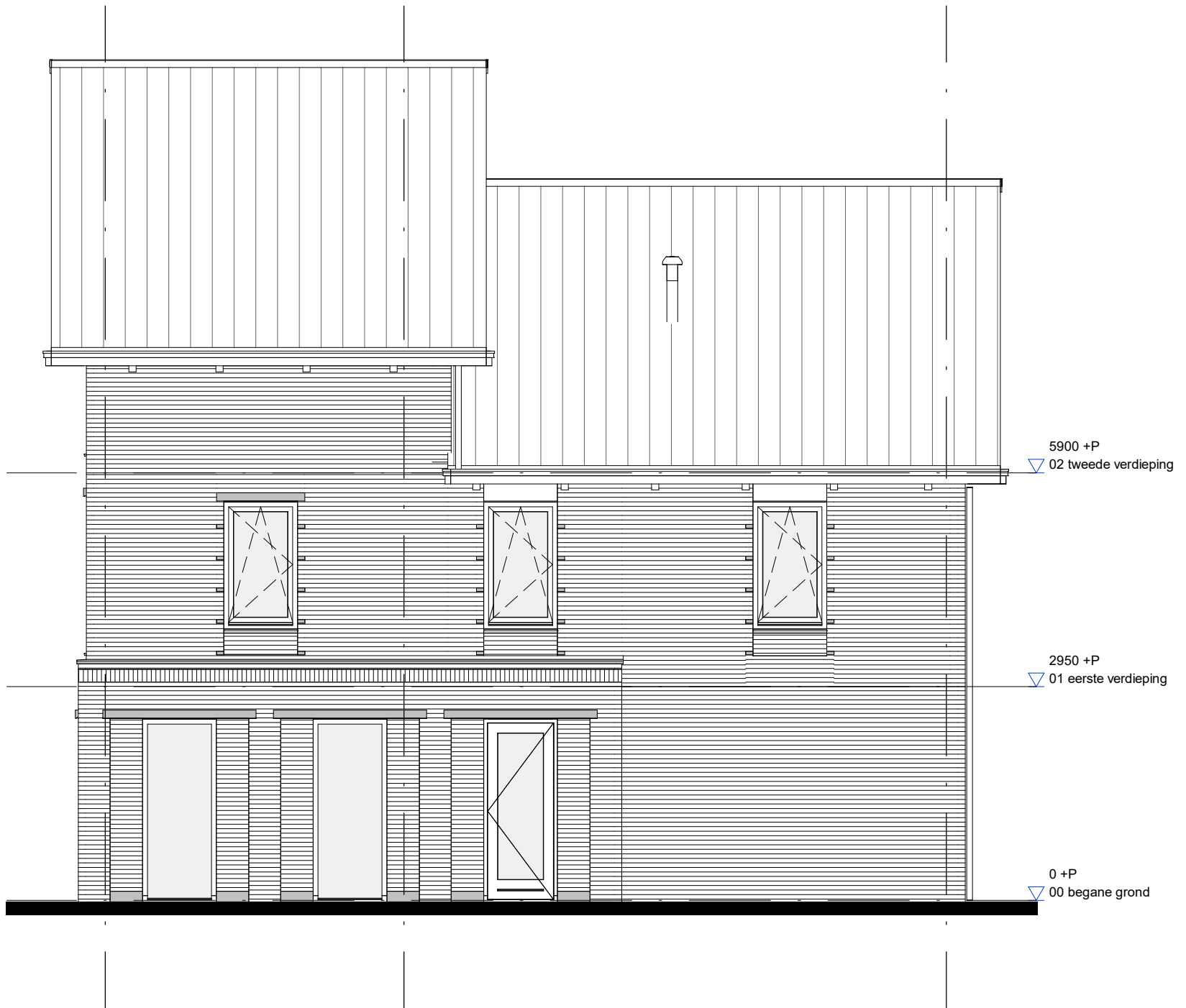
AM

| | | | |
|----------------|------------|--------------------------------------|------|
| project | | Quatrebras Park, Quartier II, Fase 2 | |
| onderwerp | | werknnummer | 1741 |
| Linkerzijgevel | | tekeningnummer | |
| Bwnr.103 | | 103.07.M6k | |
| schaal | status | (wijz)/datum | |
| 1:75 | Definitief | 27-10-2020 | |

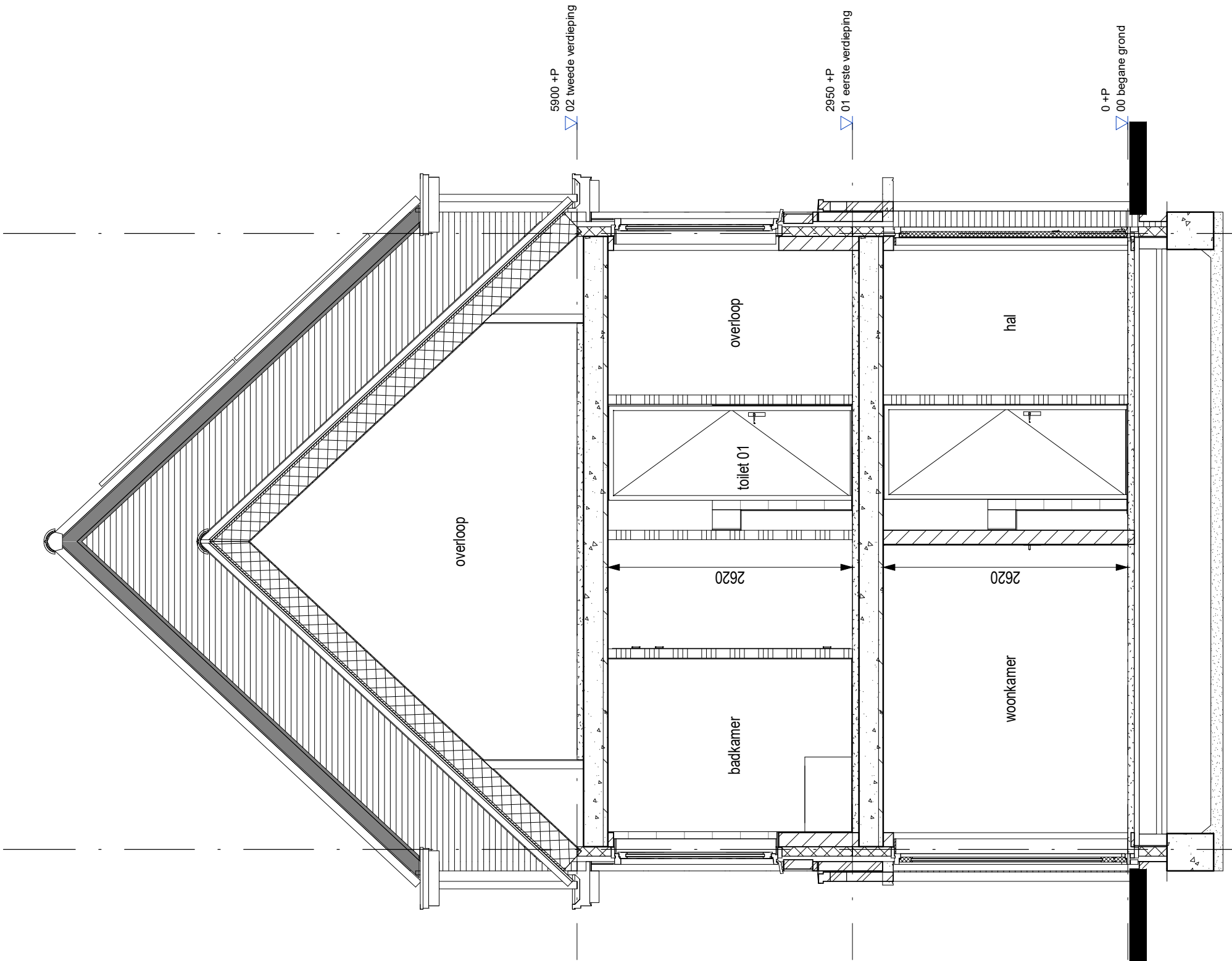


AM

| | | | |
|-------------|------------|--------------------------------------|--|
| project | | Quatrebras Park, Quartier II, Fase 2 | |
| onderwerp | | werknummer | |
| Achtergevel | | 1741 | |
| Bwnr.103 | | tekeningnummer | |
| | | 103.08.M6k | |
| schaal | status | (wijz)/datum | |
| 1:75 | Definitief | 27-10-2020 | |

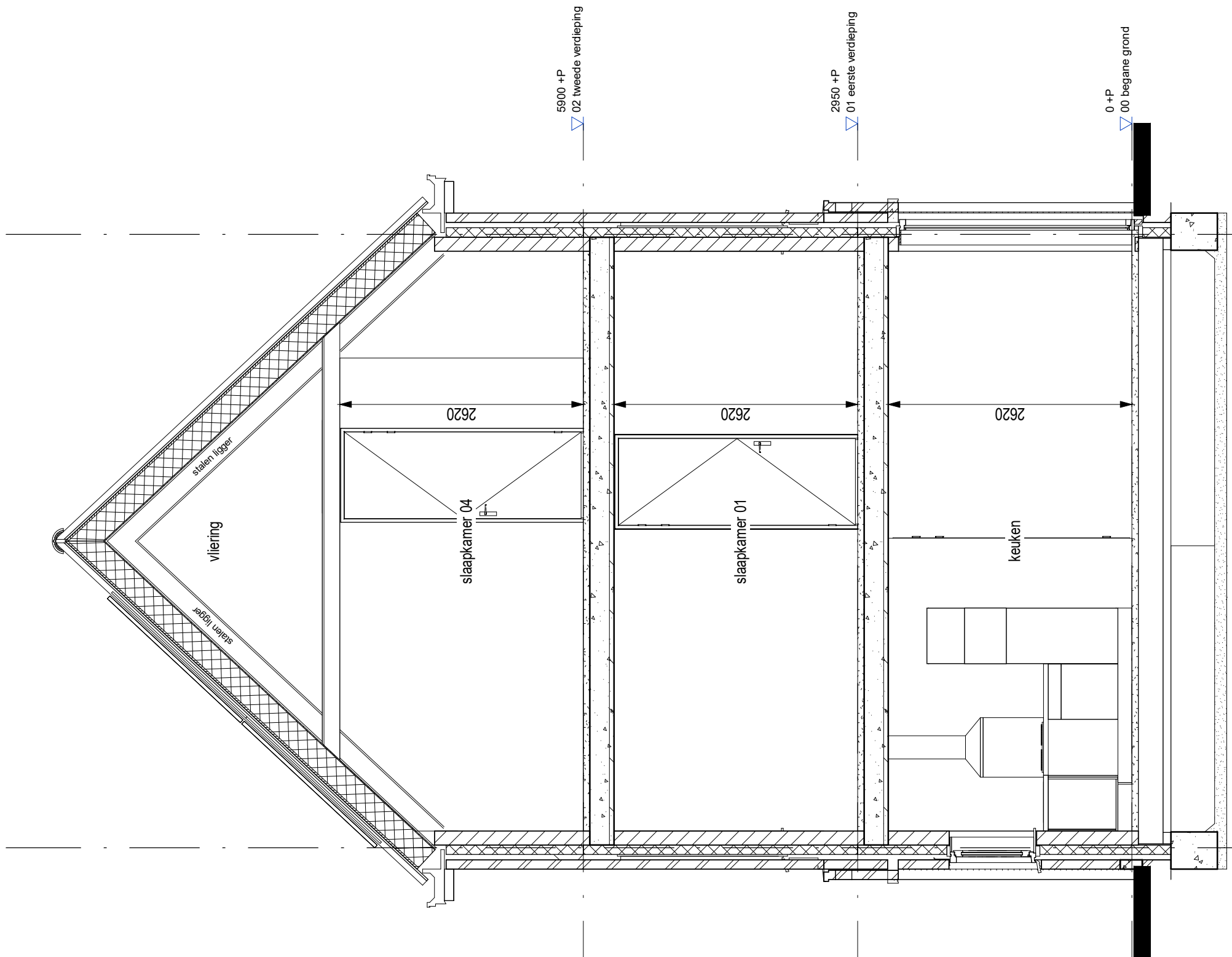


| | | | |
|-----------|------------|--------------------------------------|-----------------|
| project | | Quatrebras Park, Quartier II, Fase 2 | |
| onderwerp | | Rechterzijgevel | werknummer 1741 |
| | | Bwnr.103 | tekeningnummer |
| | | | 103.09.M6k |
| schaal | status | (wijz)/datum | |
| 1:75 | Definitief | 27-10-2020 | |



AM

| | | | |
|-------------|------------|--------------------------------------|--|
| project | | Quatrebras Park, Quartier II, Fase 2 | |
| onderwerp | | werknummer | |
| Doorsnede A | | 1741 | |
| Bwnr.103 | | tekeningnummer | |
| | | 103.10.M6k | |
| schaal | status | (wijz)/datum | |
| 1:50 | Definitief | 27-10-2020 | |



AM

| | | |
|--|----------------------|-------------------------------------|
| project Quatrebras Park, Quartier II, Fase 2 | | |
| onderwerp Doorsnede B Bwnr.103 | | werknummer 1741 |
| | | tekeningnummer 103.11.M6k |
| schaal 1:50 | status Definitief | (wijz)/datum 27-10-2020 |