




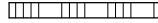


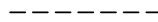
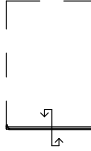
## VK tekeningenlijst - bwnr.106

Tekeningnummer	Omschrijving	Datum
106.01.M4a	Renvooi	27-10-2020
106.02.M4a	Begane grond	27-10-2020
106.03.M4a	Verdieping 1	27-10-2020
106.04.M4a	Verdieping 2	27-10-2020
106.05.M4a	Vliering	27-10-2020
106.06.M4a	Voorgevel	27-10-2020
106.07.M4a	Zijgevel	27-10-2020
106.08.M4a	Achtergevel	27-10-2020
106.09.M4a	Doorsnede	27-10-2020



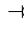
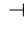
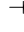
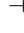










project			Quatrebras Park, Quartier II, Fase 2		
onderwerp		Voorblad		werknummer	
Bwnr.106				1741	
				tekeningnummer	
				106.00.M4a	
schaal		status		(wijz)/datum	
n.v.t.		Definitief		27-10-2020	

## RENVOOI MATERIALEN EN SYMBOLEN

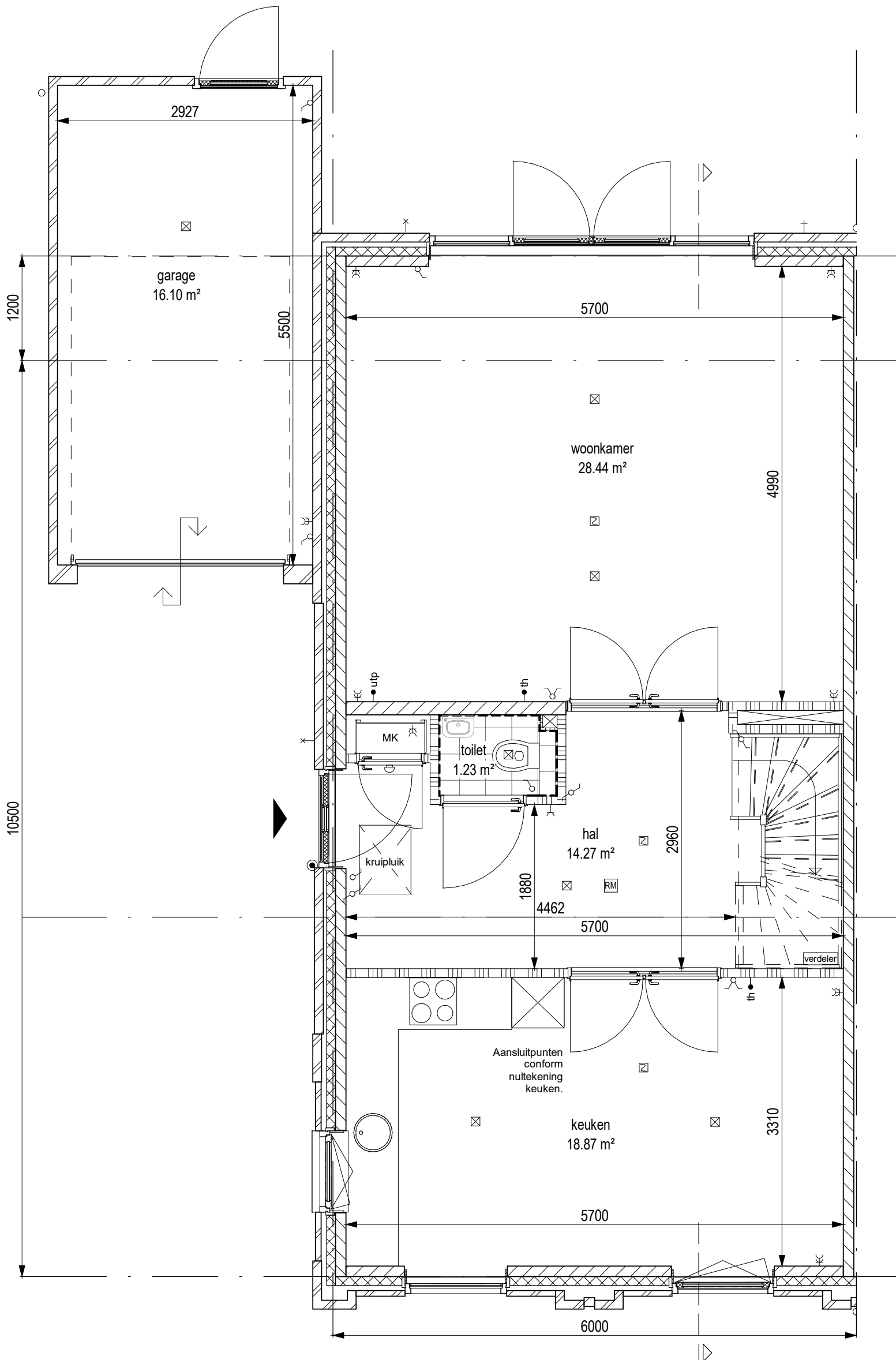
	metselwerk d=100mm
	isolatie d=102mm
	kalkzandsteen d=120mm / 150mm
	lichte binnenwand d=100mm
	binnenwand, metalstud d=100mm
	binnenwand, metalstud voorzetwand d=75mm
	wandtegelwerk
	sectionaal deur

	kruipluik
	hemelwaterafvoer
	buitenkraan
wm	opstelplaats wasmachine
wd	opstelplaats wasdroger

## RENVOOI INSTALLATIES

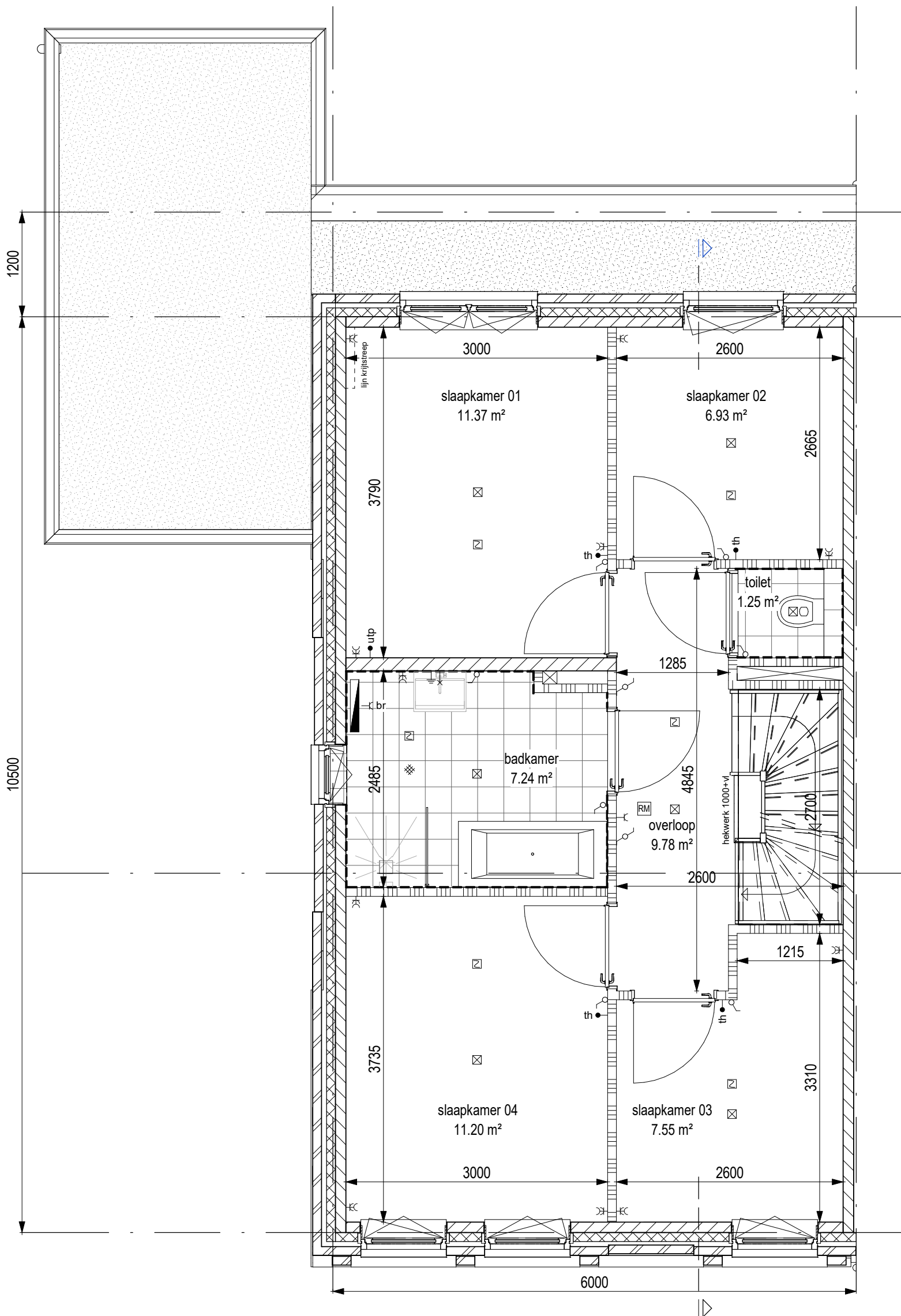
	enkele wandcontactdoos met randaarde
	enkele wandcontactdoos met randaarde, cv-ketel
	enkele wandcontactdoos met randaarde, mechanische ventilatie
	enkele wandcontactdoos met randaarde, badkamer radiator
	enkele wandcontactdoos met randaarde, wasdroger
	enkele wandcontactdoos met randaarde, wasmachine
	dubbele wandcontactdoos met randaarde, verticaal
	onbedraad aansluitpunt
	bedraad aansluitpunt, UTP
	bedraad aansluitpunt, ruimteregeling/naregeling
	aansluitpunt pv panelen
	rookmelder
	boilervat warmtepomp
	warmtepomp

	aardingspunt
	aardmat
	enkelpolige schakelaar
	serie schakelaar
	wisselchakelaar
	aansluitpunt plafondlichtpunt, inbouwspot
	aansluitpunt spotjes
	aansluitpunt wandlichtpunt
	beldrukker
	bel
	vloerverwarming
	radiator
	verdeler
	WTW - unit



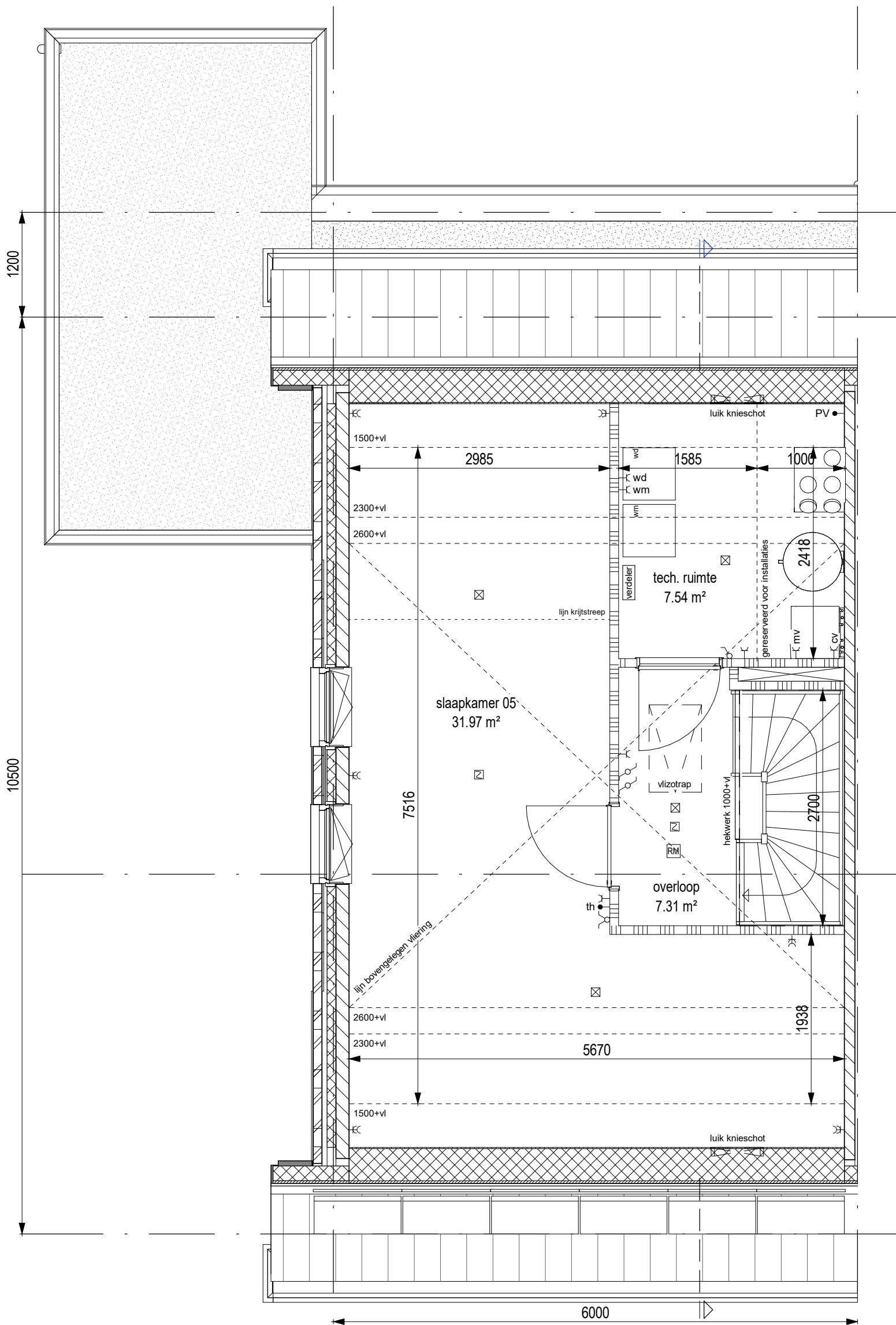
**AM**

project			Quatrebras Park, Quartier II, Fase 2		
onderwerp		Begane grond		Bwnr.106	
werknummer		1741			
tekeningnummer		106.02.M4a			
schaal		status		(wijz)/datum	
1:50		Definitief		27-10-2020	



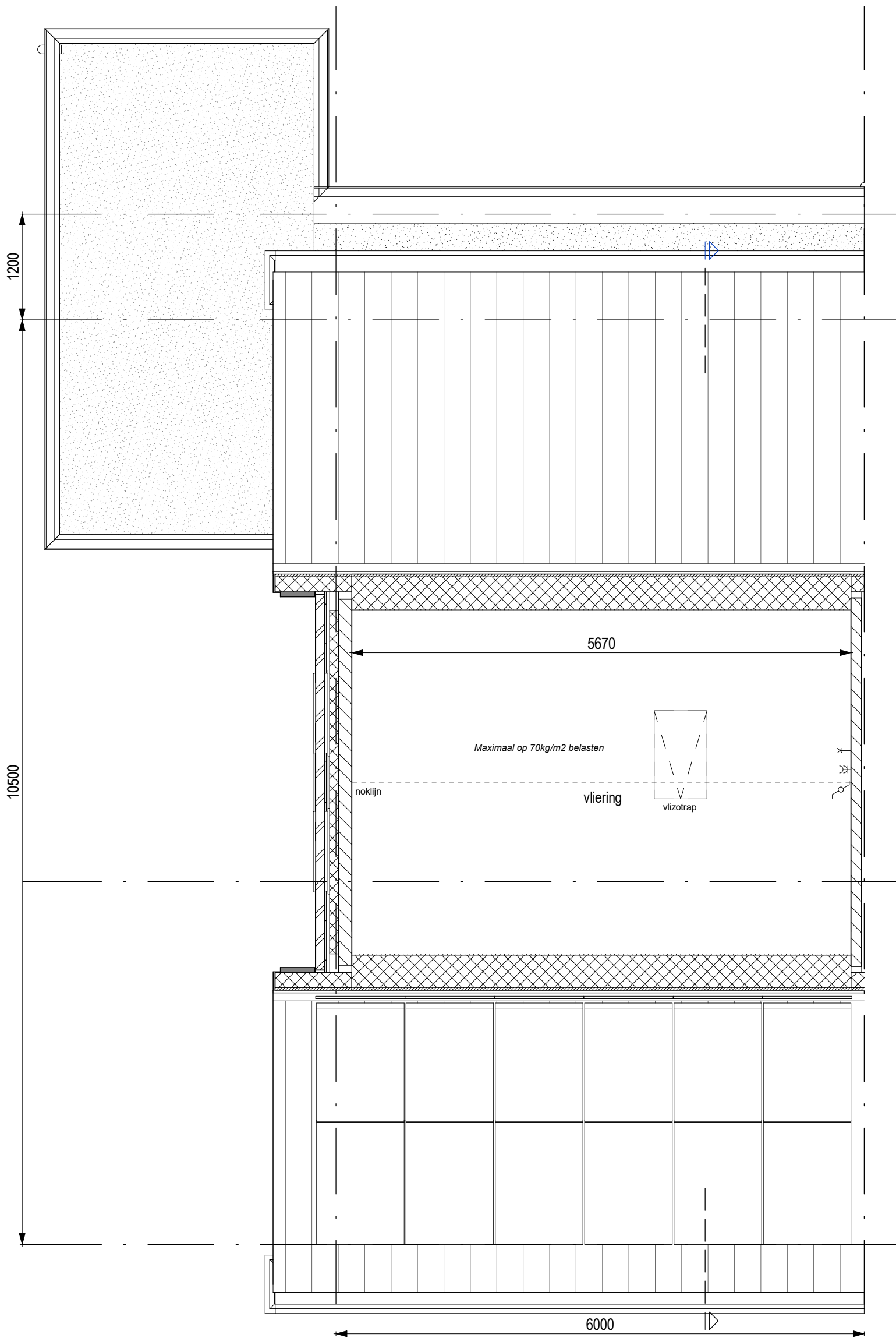
**AM**

project		
Quatrebras Park, Quartier II, Fase 2		
onderwerp	Verdieping 1 Bwnr.106	werknummer 1741
		tekeningnummer 106.03.M4a
schaal 1:50	status Definitief	(wijz)/datum 27-10-2020



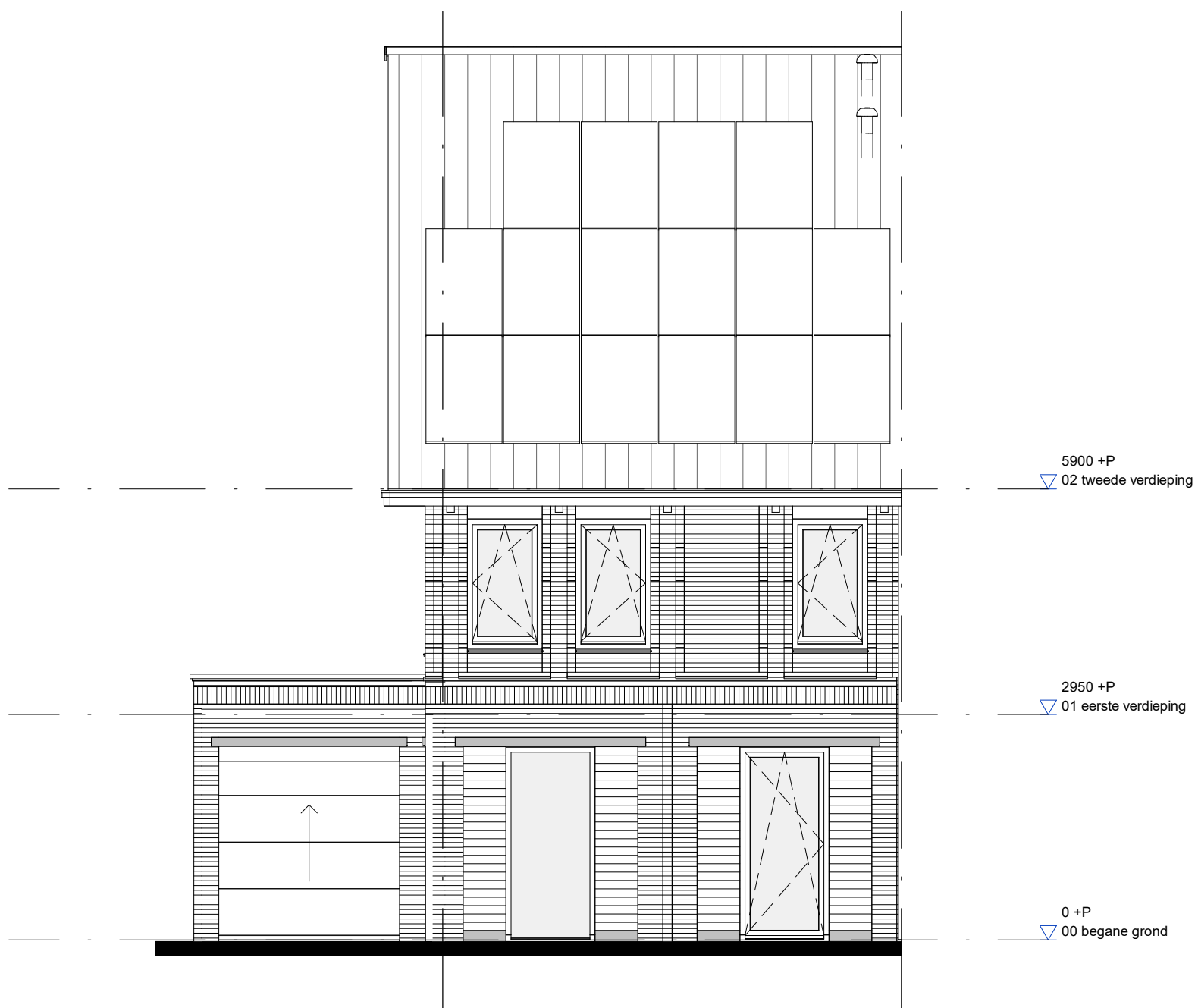
**AM**

project		
Quatrebras Park, Quartier II, Fase 2		
onderwerp	Verdieping 2 Bwnr.106	werknummer 1741
		tekeningnummer <b>106.04.M4a</b>
schaal 1:50	status Definitief	(wijz)/datum 27-10-2020



**AM**

project		Quatrebras Park, Quartier II, Fase 2	
onderwerp		werknummer	
Vloering		1741	
Bwnr.106		tekeningnummer	
		106.05.M4a	
schaal	status	(wijz)/datum	
1:50	Definitief	27-10-2020	



**AM**

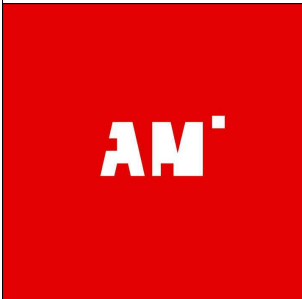
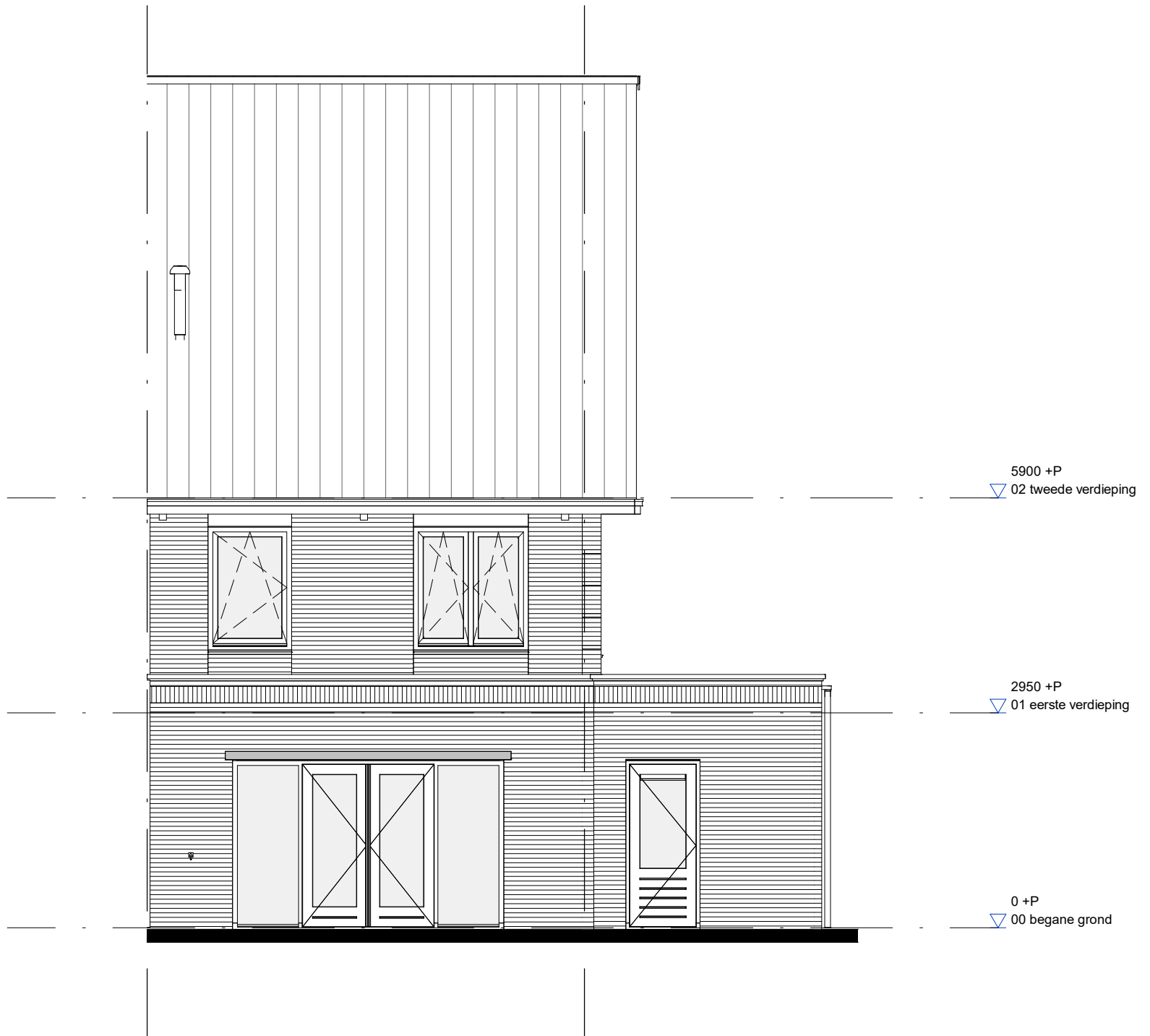
project		Quatrebras Park, Quartier II, Fase 2	
onderwerp		werknummer	
Voorgevel		1741	
Bwnr.106		tekeningnummer	
		106.06.M4a	
schaal	status	(wijz)/datum	
1:75	Definitief	27-10-2020	



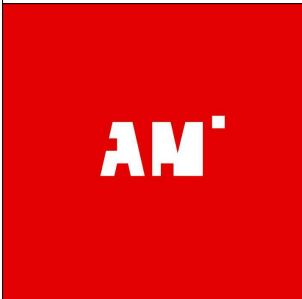
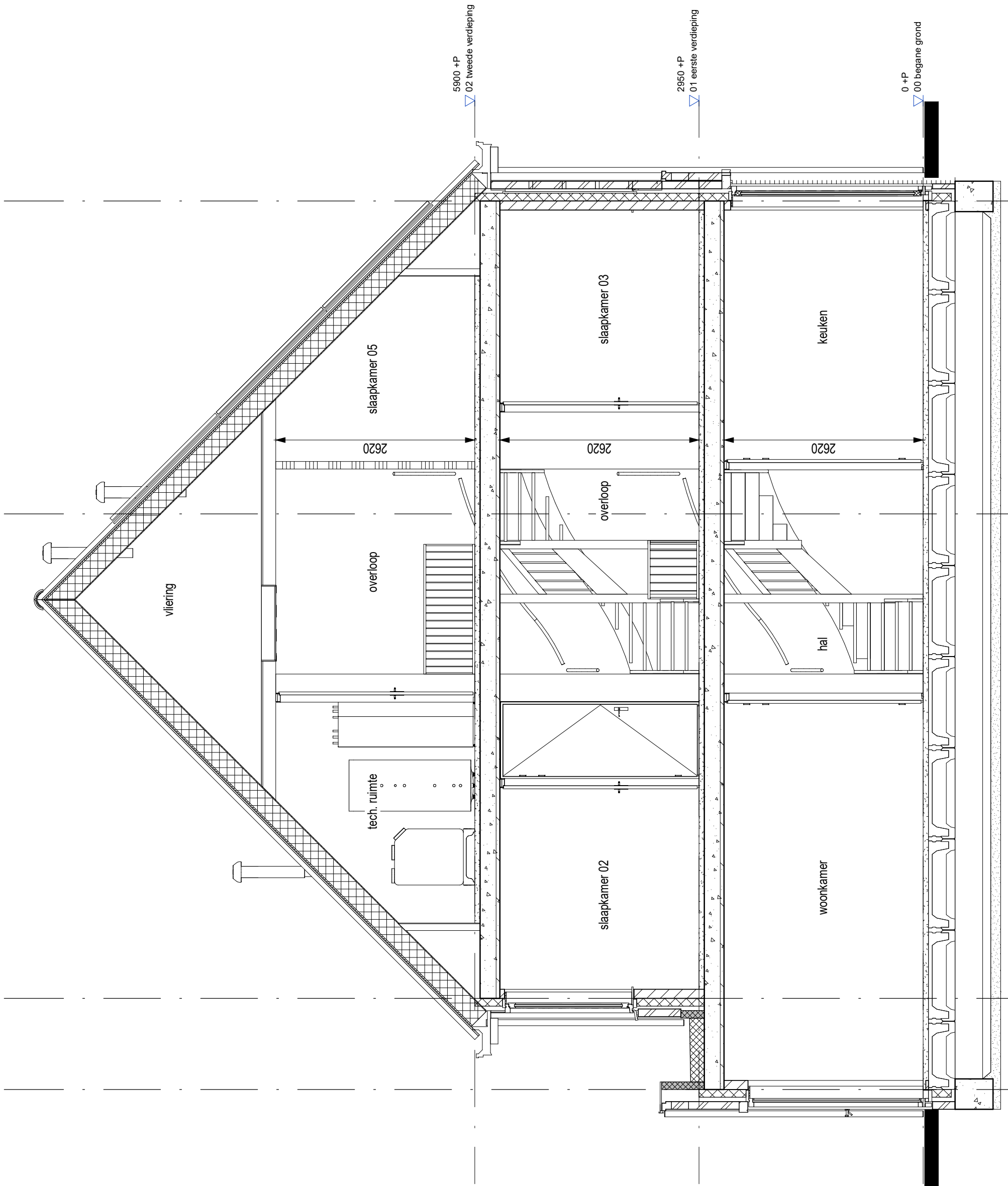
**AM**

project		Quatrebras Park, Quartier II, Fase 2	
onderwerp		werknummer	
Zijgevel		1741	
Bwnr.106		tekeningnummer	
		106.07.M4a	
schaal	status	(wijz)/datum	
1:75	Definitief	27-10-2020	





project		Quatrebras Park, Quartier II, Fase 2	
onderwerp		werknummer	
Achtergevel		1741	
Bwnr.106		tekeningnummer	
		106.08.M4a	
schaal	status	(wijz)/datum	
1:75	Definitief	27-10-2020	



project <b>Quatrebras Park, Quartier II, Fase 2</b>		
onderwerp Doorsnede Bwnr.106	werksnummer 1741	tekeningsnummer <b>106.09.M4a</b>
schaal 1:50	status Definitief	(wijz)/datum 27-10-2020